

TITLE 5

PUBLIC PEACE, HEALTH, SAFETY, AND WELFARE

CHAPTER 550

AMBULANCE SERVICE AREA CODE

TABLE OF CONTENTS

Section Title

I. GENERAL PROVISIONS AND PLAN CERTIFICATION	550.420	Response times
550.001	550.425	Pre-arranged non-emergency transfers and inter-facility transfers
550.005		2. LEVELS OF CARE
550.010	550.430	Levels of care
550.030		3. PERSONNEL STANDARDS FOR 1ST RESPONSE
550.050	550.440	Personnel standards; generally
550.100	550.445	Personnel for first response ambulances; staffing and operating standards
	550.447	Personnel for first response vehicles; staffing and operating standards
	550.450	Medical supervision standards
	550.460	Training standards
		4. EQUIPMENT STANDARDS
	550.470	Patient care equipment standards
	550.475	Vehicle standards
		5. QUALITY ASSURANCE PROGRAM
	550.480	Quality assurance program established
		V. COORDINATION
	550.500	Authority
		A. INPUT PROCESS
	550.505	Administration responsibility
	550.510	Input process for consideration by the County
		B. MUTUAL AID AGREEMENTS
	550.515	Mutual aid agreements
		C. DISASTER RESPONSE
	550.520	Disaster response; generally
	550.525	County resources other than ambulances
	550.530	Out of county resources
	550.535	Mass Casualty Incident (MCI) Plan
		D. PERSONNEL AND EQUIPMENT RESOURCES
	550.540	Personnel and equipment resources
	550.545	Hazardous materials response resource
	550.550	Search and rescue
	550.555	Specialized rescue
	550.560	Extrication
		F. EMERGENCY COMMUNICATIONS AND SYSTEM ACCESS
	550.570	Dispatch procedures
	550.575	Radio system
	550.580	Emergency medical services dispatch training
		VI. PROVIDER SELECTION
	550.600	Authority
	550.610	Authority for ambulance service area assignments
	550.612	Licensing requirements
II. OVERVIEW OF COUNTY (DEMOGRAPHIC AND GEOGRAPHIC DESCRIPTION)		
550.200		Authority
550.205		Overview of Linn County
III. BOUNDARIES		
550.300		Authority
550.310		ASA map and system response time zones
550.320		Maps depicting 9-1-1, fire districts and incorporated cities
550.330		Ambulance Service Areas; narrative legal descriptions
	ASA #1 -	Albany Fire Department ASA
	ASA #2 -	Lebanon Fire Department ASA
	ASA #3 -	Sweet Home Ambulance and Fire District ASA
	ASA #4 -	Corvallis Fire Department ASA
	ASA #5 -	Lane Rural Fire/Rescue ASA
	ASA #6 -	Santiam Ambulance ASA
	ASA #7 -	Idanha/Detroit Ambulance ASA
	ASA #8 -	Lyons Ambulance ASA
	ASA #9 -	Sisters Fire Department ASA
	ASA #10 -	Jefferson Ambulance ASA
	ASA #11 -	Springfield Department of Fire and Life Safety ASA
550.340		Alternatives considered to reduce notification and response times
IV. SYSTEM ELEMENTS		
550.400		Authority
550.410		System elements; generally
	1. RESPONSE TIMES; NON-EMERGENCY TRANSFERS	

- 550.615 Initial assignment of existing ambulance service providers
- 550.620 Reassignment of an ASA
- 550.630 Application process for applying for an ASA
- 550.640 Notification of vacating an ASA
- 550.650 Maintenance of level of service

VII. ASA PLAN ADMINISTRATION PROCESS

- 550.700 Authority
 - A. ADMINISTRATION ENTITY
 - 550.705 Linn County Ambulance Service Area Advisory Committee established
 - 550.710 Purposes of the Committee
 - 550.715 Duties and functions of the Board and of the Committee
 - B. COMMUNITY INPUT AND PLAN AMENDMENT PROCESSES
 - 550.720 Input process for consideration by the County
 - 550.725 Amendments to this Chapter
 - C. COMPLAINT REVIEW PROCESS
 - 550.730 Complaint review process
 - D. SANCTION HEARING PROCESS BEFORE THE BOARD
 - 550.750 Hearing procedures

VIII. SANCTIONS

- 550.800 Authority
- 550.810 Sanctions for non-compliant personnel or providers
- 550.820 Public nuisance declared
- 550.830 Problem resolution
- 550.840 Suspension or revocation of an ASA
- 550.850 Service record requirement

IX. PENALTIES

- 550.900 Penalties

STATUTORY REFERENCES AND OTHER AUTHORITIES

LEGISLATIVE HISTORY OF CHAPTER 550

APPENDIX 1 — TWO MAPS SHOWING RESPONSE TIME ZONES, 9-1-1, FIRE DISTRICTS, AND INCORPORATED CITIES

I. GENERAL PROVISIONS AND PLAN CERTIFICATION

550.001 Title

(A) This Chapter, LCC 550.001 to 550.900, shall be known and may be cited as the “Linn

County Ambulance Service Area Code” or simply as the “Ambulance Service Area Code.”

(B) The Ambulance Service Area Code is the codification of the “Linn County Ambulance Service Area Plan.”

[Adopted 01-110 §3 06/27/01]

550.005 Authority

(A) The authority for this Chapter is provided by ORS 682.205 and 682.275, which requires:

(1) That Linn County develop a plan relating to the need for and coordination of ambulance services and establish one or more ambulance service areas consistent with the plan for the efficient and effective provision of ambulance services;

(2) That the county submit the plan and amendments thereto to the Public Health Division of the Oregon Health Authority for approval pursuant to rules that the division has adopted pursuant to ORS 682.205 (5) and that are set forth in OAR Chapter 333, Division 260 (County Ambulance Service Area Plans); and

(3) That the county determine whether an ordinance that the county adopts in order to regulate ambulance services or emergency medical technicians is in compliance with this Chapter.

(B) OAR 333-250-0020 establishes requirements and authority for the Emergency Medical Services and Trauma Systems Program, within the Oregon Health Authority, Public Health Division, or Authority, to issue licences to operate ambulance services.

(C) OAR 333-260-0000 provides that the adoption and amendment of ambulance service plans and the establishment of ambulance service areas are a matter for regulation by county government within the parameters of relevant statutes and administrative rules.

[Adopted 01-110 §3 06/27/01 (see ORS 682.205 and 682.275); amd 22-101 §1 eff 07/01/22]

550.010 Definitions

(A) As used in this Chapter:

(1) “Advanced life support” or “ALS” means the level of emergency medical care provided by Paramedics.

(2) “**Ambulance**” or “**ambulance vehicle**” means any privately or publicly owned motor vehicle, aircraft or watercraft that is regularly provided or offered to be provided for the emergency transportation of persons suffering from illness, injury or disability.

(3) “**Ambulance service**” means any person, governmental unit, corporation, partnership, sole proprietorship or other entity that operates ambulances and that holds itself out as providing prehospital care or medical transportation to sick, injured or disabled persons.

(4) “**Ambulance Service Area**” or “**ASA**” means a geographic area which is served by one ambulance service provider, and may include all or a portion of a county, or all or portions of two or more contiguous counties.

(5) “**Ambulance Service Plan**” or “**ASP**” means a written document, which outlines a process for establishing a county emergency medical services system. A plan addresses the need for and coordination of ambulance services by establishing ambulance service areas for the entire county and by meeting the other requirements of these rules. Approval of a plan will not depend upon whether it maintains an existing system of providers or changes the system. For example, a plan may substitute franchising for an open-market system. The ASP adopted by Linn County is codified in this Chapter.

(6) “**Area Trauma Advisory Board**” or “**(ATAB)**,” as described in OAR 333-200-0010, means an advisory group appointed by the Oregon Health Authority for each established trauma area to represent providers of trauma care and members of the public.

(7) “**Area 2 Trauma Care System Plan**” means the plan that is published by the Authority. The Area 2 Trauma Care System Plan is maintained by the Area 2 Trauma Advisory Board.

(8) “**ASA Advisory Committee**” or “**Committee**” means a committee formed to review standards, make recommendations to the Board of Commissioners for matters regarding EMS and review and make recommendations regarding soundness of the ASA.

(9) “**Authority**” means the Emergency Medical Services and Trauma Systems Program, within the Oregon Health Authority, Public Health Division.

(10) “**Basic life support**” or “**BLS**” means the level of emergency medical care provided by EMTs.

(11) “**Board of Commissioners**” or “**Board**” means the elected officials that have jurisdiction over the Linn County ASA Plan.

(12) “**Communication system**” means two-way radio communications between ambulances, emergency medical dispatchers, hospitals and other agencies as needed.

(13) “**Disaster**” means the occurrence or imminent threat of widespread or severe damage, injury or loss of life or property resulting from any natural or human cause including fire, flood, earthquake, wind, storm, wave action, oil spill, or other water contamination, radioactive activity, epidemic, air contamination, blight, drought, infestation, explosion, riot, hostile military or paramilitary action, or other public calamity requiring emergency action.

(14) “**Dispatch center**,” as described in ORS 401.710 (12), means a Public Safety Answering Point from which requests for emergency medical assistance is received and emergency medical service providers are dispatched to respond to the request for emergency medical service.

(15) “**Dispatcher**” has the following meanings:

(a) “emergency telephone worker” as that term is defined in ORS 243.736 (2);

(b) “telecommunicator” as that term is defined in ORS 181.610 (18); and

(c) “emergency medical dispatcher” as that term is defined in ORS 181.610 (9).

(16) “**Division**” means the Public Health Division, Oregon Health Authority.

(17) “**Effective provision of ambulance services**” means ambulance services provided in compliance with the provisions for boundaries, coordination and system elements found in this Chapter.

(18) “**Efficient provision of ambulance services**” means effective ambulance services provided in compliance with the provisions for provider selection found in this Chapter.

(19) “**Emergency**” means any non-hospital occurrence or situation involving illness, injury or disability requiring immediate medical or psychiatric services, wherein delay in the provision of such services is likely to aggravate the condition and endanger personal health or safety.

(20) “**Emergency management agency**” or “**EMA**” means the agency established pursuant to the current edition of Linn County Emergency Operations Plan.¹

(21) “**Emergency medical service**” or “**EMS**” means those pre-hospital functions and services whose purpose is to prepare for and respond to medical emergencies, including rescue and ambulance services, patient care, communications and evaluation

(22) “**Emergency Medical Technician**” or “**EMT**” means a person certified by the Authority as defined in OAR 333-265-0000(19).

(23) “**Emergency Medical Technician-Intermediate**” or “**EMT-Intermediate**” means a person certified by the Authority as defined in OAR 333-265-0000(20).

(24) “**Emergency operations center**” or “**EOC**” means site from where local state and federal agencies coordinate off-scene support to on-scene responders.

(25) “**Emergency program manager**” or “**EPM**” means the person appointed by the Board of Commissioners to administer the emergency management agency created by order of the Board in its Emergency Operations Plan.²

(26) “**First responder**” means a person who has successfully completed a first responder training course approved by the Authority and:

(a) Has been examined and certified as a first responder by an authorized representative of the Authority to perform basic emergency and non-emergency care procedures; or

(b) Has been otherwise designated as a first responder by an authorized representative of the Authority to perform basic emergency and non-emergency care procedures.

(27) “**First response vehicle**” means a vehicle other than an ambulance on which a person meeting the requirements set forth in LCC 550.447 is present at the time of the response.

(28) “**Hazardous material**” or “**HAZMAT**” means any element, compound, mixture, solution or substance which, when spilled or released into the air or into or on any land or waters of the state, may present a substantial danger to the public health, safety, or environment.

(29) “**Health Officer**” means the Linn County Health Officer.

(30) “**Intermediate life support**” or “**ILS**” means the level of emergency medical care provided by EMT-Intermediate.

(31) “**Incident,**” for the purpose of this Chapter, means any event that results in a response requiring an emergency response that includes an emergency medical service component. This can include, but is not limited to: release or spills of hazardous materials; fires; transportation accidents; planned events; response to natural hazards; industrial accidents; law enforcement incidents; wide area search and rescue missions. Action by emergency service personnel will be required to prevent or minimize loss of life or damage to property and/or natural resources.

(32) “**Incident commander**” or “**IC**” means the one individual in charge of an incident at any given time.

(33) “**License**” means those documents issued by the Authority to the owner of an ambulance service and ambulance, when the service and ambulance are found to be in compliance with ORS 682.015 to 682.991 and OAR 333-250-0000 to 333-250-0100 and 333-255-0000 to 333-255-0090.

¹As of January 1, 2000, that edition is Linn County order 83-452, as amended 1/1/96; 97-486 eff 10/1/97; 97-524 eff 10/29/97; 98-414 eff 12/9/88.

²As of January 1, 2000, that edition is Linn County order 83-452, as amended 1/1/96; 97-486 eff 10/1/97; 97-524 eff 10/29/97; 98-414 eff 12/9/88.

(34) “**Linn County Ambulance Service Area Manual**” or “**Ambulance Service Area Manual**” or “**ASM**” means the administrative provisions adopted by Linn County to implement this Chapter.

(35) “**Medical director**” has the meaning of a supervising physician as provided in ORS 682.025 (18).

(36) “**Notification time**” means the length of time between the initial receipt of the request for emergency medical service by a dispatch center (PSAP), and the notification of the appropriate responding emergency medical service personnel.

(37) “**On-scene coordinator**” or “**OSC**” means the individual on-scene responsible for coordinating the resources at each respective level of government. OSC’s may include:

(a) “Local on-scene coordinator (LOSC);

(b) State on-scene coordinator (SOSC); and

(c) Federal on-scene coordinator (FOSC).

(38) “**Out-of-county provider**” means an ASA provider under an ambulance service plan with another county that has been adopted pursuant to ORS 682.205 and approved by the Oregon Health Authority.

(39) “**Owner**” means the person having all the incidents of ownership in an ambulance service or an ambulance vehicle or where the incidents of ownership are in different persons, the person, other than a security interest holder or lessor, entitled to the possession of an ambulance vehicle or operation of an ambulance service under a security agreement or a lease for a term of 10 or more successive days.

(40) “**Paramedic**” means a person certified by the Authority as defined in OAR 333-265-0000(26).

(41) “**Patient**” means an ill, injured, or disabled person who may be transported in an ambulance.

(42) “**Provider**” means any public, private or volunteer entity providing EMS.

(43) “**Provider selection process**” means the process established in this Chapter for selecting an ambulance service provider or providers.

(44) “**Public information officer**” or “**PIO**” means a person designated by the incident commander who provides information to the public and media.

(45) “**Public safety answering point**” or “**PSAP**” means a 24-hour communications facility established as an answering location for 9-1-1 calls originating within a given service area. A “primary public safety answering point” receives all calls directly from the public. A “secondary public safety answering point” only receives calls from a primary public safety answering point on a transfer or relay basis. (ORS 401.710 (12))

(46) “**Quick response team**” or “**QRT**” means an agency that provides initial response and basic life support care without transportation capabilities by certified First Responders.

(47) “**Response time**” means the length of time between the notification of each provider and the arrival of each provider’s emergency medical service unit(s) at the incident scene.

(48) “**Responsible party**” means the person or firm who, by law, is strictly liable for cleanup of any spill or release.

(49) “**System response time**” means the elapsed time from when the PSAP receives the call until the arrival of the appropriate provider unit(s) on the scene.

(B) As used in this Chapter, the following abbreviations mean:

ALS	Advanced life support
ASA	Ambulance Service Area
ASM	Ambulance Service Manual
ASP	Ambulance Service Plan
BLS	Basic Life Support
EMA	Emergency Management Agency
EMS	Emergency medical service
EMT	Emergency medical technician
EOC	Emergency Operations Center
EPM	Emergency Program Manager
IC	Incident Commander
ILS	Intermediate Life Support
PIO	Public Information Officer

[Adopted 01-110 §3 06/27/01 (see ORS 401.710 (12); OAR 333-260-0010, 333-260-0020 (3.3)); amd 22-101 §1 eff 07/01/22]

550.030 Ambulance Service Area Plan; contents

The Linn County Ambulance Service Area Plan, as submitted to and approved by the Division, shall consist of the following elements as required by OAR 333-260-0020(3):

(A) Linn County’s certification of the Ambulance Service Plan (substantially set forth in LCC 550.100).

(B) Overview of Linn County, including demographic and geographic descriptions (substantially set forth in LCC 550.200 to 550.205).

(C) Definitions (substantially set forth in LCC 550.010).

(D) Boundaries (substantially set forth in LCC 550.300 to 550.340 and the maps found at the end of this Chapter).

(E) System elements (substantially set forth in LCC 550.400 to 550.480, 550.700 to 550.750, 550.800 to 550.850, and 550.900).

(F) Coordination (substantially set forth in LCC 550.500 to 550.580 and 550.700 to 550.750).

(G) Provider selection (substantially set forth in LCC 550.600 to 550.650).

(H) Linn County ordinance and rules (substantially set forth in LCC 550.040 to 550.060, and 550.700 to 550.750).

[Adopted 01-110 §3 06/27/01; (see OAR 333-260-0020 (3), 333-260-0030 (1))]

550.040 Adoption of the Plan

(A) The adoption and amendment of ambulance service plans and the establishment of ambulance service areas is a matter for regulation by county government within the parameters of relevant statutes and OAR 333, Division 260.

(B) This Linn County Ambulance Service Area Plan is hereby adopted pursuant to ORS 682.205, 682.275, OAR 333-260-000 and 333-260-0070. The previous plan, Ordinance 88-683 as amended is repealed.

[Adopted 01-110 §3 eff 06/27/01 (see ORS 682.205, OAR 333-260-0000)]

550.050 Original ASA Plan; background

(A) The original Linn County Ambulance Service Area Plan was prepared and published by Linn County in December 1988 and was amended August 1992. The original plan was adopted by Linn County ordinance 88-683. The last amendment was adopted February 10, 1999.

(B) The original ASA Plan was prepared by the Linn County Sheriff’s Office: Art J. Martinak, Sheriff; with the assistance of Loran E. Davis, Staff.

[Adopted 01-110 §3 eff 06/27/01 (see ORS 682.205, OAR 333-260-0000)]

550.100 Certification of Linn County Ambulance Service Plan

The Board hereby certifies pursuant to OAR 333-260-0020 and 333-260-0030, regarding the ambulance service area plan that was submitted to the Division, that:

(A) Each subject or item contained in this Chapter has been addressed and considered in the adoption of this Chapter by this body.

(B) In this Board’s judgment, the ambulance service areas established in this Chapter provide for the efficient and effective provision of ambulance services.

(C) To the extent they are applicable, the Board has complied with ORS 682.205 (2) and (3), 682.335, and existing local ordinances and rules.

[Adopted 01-110 §3 eff 06/27/01 (see (see OAR 333-260-0020 (3.1), 333-260-0030 (2)))]

II. Overview of County (Demographic and Geographic Description)

550.200 Authority

LCC 550.200 to 550.205 is adopted to implement OAR 333-260-0020 (3.2).

[Adopted 01-110 §3 eff 06/27/01 (see OAR 333-260-0020 (3.5.k), 333-260-0050 (3))]

550.205 Overview of Linn County

(A) Linn County is centrally located in the Willamette Valley and is bordered by Lane County to the south, Benton and Polk Counties to the west, Marion County to the north and Jefferson and Deschutes Counties to the east.

(B) The County is nearly rectangular in shape and covers approximately 2,297 square miles. The western one-third portion consists of valleys and foothills, while the eastern two-thirds consist of mountains, deep narrow canyons and steep slopes.

(C) Albany is the county seat. Its elevation is 212 feet and Albany is located along Interstate 5 that runs north and south through the western portion of the county.

(D) The climate is characterized by an overall average January temperature of 39°F and an average July temperature of 66°F with an average annual precipitation of 42.55 inches.

(E) The population of the County as of the 2020 Census was 128,610. Linn County has thirteen incorporated cities. Most of the County’s inhabitants reside in or around the three most populated incorporated cities. The population of the County’s largest cities are:

CITY	1998 POPULATION
Albany	56,472
Lebanon	18,447
Sweet Home	9,828

(F) Agriculture, food products, wood products, rare metals and manufacturing provide the basis of the county’s economy.

(G) Linn County is divided into eleven separate ambulance service areas. The eleven ambulance service providers, their boundaries, and other general information are described in this Chapter. Each ambulance service provider offers:

- (1) either basic, intermediate, or advanced life support emergency medical care, or any combination thereof; and
- (2) transportation.

[Adopted 01-110 §3 eff 06/27/01; (see OAR 333-260-0020 (3.2)); amd 22-101 §1 eff 07/01/22]

III. BOUNDARIES

550.300 Authority

LCC 550.300 to 550.340 are adopted to implement OAR 333-260-0020 (3.4) and 333-260-0040 specifically.

[Adopted 01-110 §3 eff 06/27/01 (see OAR 333-260-0020 (3.4), 333-260-0040)]

550.310 ASA map and system response time zones

(A) Maps as required by OAR 333-260-0020 (3.4.a) and 333-260-0040 (2) are hereby adopted by the Board which depict:

- (1) ASA boundaries; and
- (2) Response time zones.

(B) The originals of the maps are on file in the Clerk’s office with the original Linn County ordinance, as amended by Ordinance No. 2022-101. Reproductions thereof are on file in the Linn County Sheriff’s Office. Copies of the originals, reproduced in a format and reasonable size to be placed herein, are found at the end of this Chapter.

(C) The maps depicting “system response time” include notification time, roll-out time, and provider response time. Actual response time is subject to the variables of access, weather, road and traffic conditions as well as other circumstances that can impact response time.

(D) Notwithstanding any other provision of this Chapter, the Board may amend the maps from time to time by resolution and order provided however that any boundary or assignment changes must be adopted by an ordinance amending this Chapter.

[Adopted 01-110 §3 eff 06/27/01 (see OAR 333-260-0020 (3.4.a), 333-260-0040 (2)); amd 22-101 §1 eff 07/01/22]

550.320 Maps depicting 9-1-1, fire districts and incorporated cities

(A) Maps as required by OAR 333-260-0020 (3.4.c) and 333-260-0040 (3) have been adopted by the Board which depict:

- (1) 9-1-1 areas (the location of PSAPs);
- (2) Fire districts; and
- (3) Incorporated cities.

(B) The originals of the maps are on file in the Clerk’s office with the original Linn County ordinance 01-110. Reproductions thereof are on file in the Linn County Sheriff’s Office. Copies of the originals, reproduced in a format and reasonable size to be placed herein, are found at the end of this Chapter.

[Adopted 01-110 §3 eff 06/27/01 (see OAR 333-260-0020 (3.4.c), 333-260-0040 (3))]

550.330 Ambulance Service Areas; narrative legal descriptions

(A) A narrative legal description of the boundaries for each ambulance service areas as required by OAR 333-260-0020 (3.4.b) and 333-260-0040 (2) is as follows:

ASA #1 - Albany Fire Department ASA

Beginning at the intersection of the center of the Willamette River and center of the Santiam river; running thence South-easterly on the center of the Santiam River to the junction of the North Santiam River and the South Santiam River; thence Southeasterly on the center of the South Santiam River to the South line of the Walter Ketchum Donation Land Claim No. 42 in Section 10, Township 11 South, Range 2 West, Willamette Meridian; thence South 74o 23' West on said South line to the East of right-of-way line of Highway 20; thence South-easterly on said East line to the center- line of Gerig Drive (C.R. No. 657); thence West on the centerline of Gerig Drive (C.R. No. 657) to the North-South centerline of Section 17, Township 11 South, Range 2 West, Willamette Meridian; thence South to centerline of Bolhken Drive (C.R. No. 658); thence West on the centerline of Bolhken Drive (C.R. No. 658) to a point due North of the Northeast Corner of the Creed H. Amos Donation Land Claim No. 59, Township 11 South, Range 2 West, Willamette Meridian; thence South to the centerline of Spicer Drive (C.R. No. 9); thence west and North on Spicer Drive (C.R. No. 9) to Stutzman Drive (C.R. No. 340); thence West on the centerline of Stutzman Drive (C.R. No. 340) to Goltra Road (C.R. No. 339); thence South on the centerline of Goltra Road (C.R. No. 339) to State Highway No. 34; thence West on the centerline of State Highway No. 34 to the East right-of-way line of Interstate Highway 5; thence South on the East right-of-way line of Interstate Highway 5 to centerline of State Highway 228; thence to the centerline of Interstate 5; thence South on the centerline of Interstate Highway 5 to the centerline of Diamond Hill Drive (C.R. No 14); thence West to the West right-of-way line of Interstate Highway 5; thence North on said West right-of-way line to the North line of Section 33, Township 14 South, Range 3 West, Willamette Meridian; thence West to the centerline of Cartney Drive (C.R. No. 224); thence West on the centerline of Cartney Drive (C.R. No. 224) to the center of the Oregon Electric Railroad right-of-way; thence North on the center of said railroad right-of-way to the centerline of State Highway No. 34; thence West on the centerline of State Highway No. 34 to Riverside Drive (C.R. No 1); thence North on the centerline of Riverside Drive (C.R. No. 1) to Walnut Drive (C.R. No. 109); thence West to the center of the Willamette River, thence Northerly on the center of the Willamette River to the point of beginning.

ASA #2 - Lebanon Fire Department ASA

Beginning at the southwest Corner of Section 13, T. 15 S., R. 2 W., WM (being on the South line of Linn County); Running thence North, 5 miles to the Northwest Corner of Section 25, T. 14 S., R. 2 W., WM; thence East ½ mile; thence North 1/4 mile; thence West ½ mile; thence North ¾ mile to the southeast Corner of Section 14, T. 14 S., R.2W., WM.; thence West 1 mile; thence North ½ mile; thence East, 1 mile; thence North ½ mile to the Northeast Corner of said Section 14; thence West, ¾ mile; thence North to the Calapooia River; thence upstream of said river to its intersection with the west line of Section 12, T.14S., R.2 W., WM; thence North to the Northwest Corner of Section 1, T. 14 S., R. 2 W., WM; thence East 1 mile to the Southwest Corner of Section 31, T. 13 S., R. 1 W., WM; thence North, 1 mile; thence West, ½ mile; thence North, 1 mile; thence West, ½ mile; thence North, 1 mile; thence East 1 mile to the Northwest Corner of Section 19, T.13 S., R.1 W., WM; thence North, ½ mile; thence East to Noble Slough; thence downstream of said slough to its intersection of the North line of the South half of the South half of Section 10, T. 13 S., R. 1 W., WM; thence East to the south Santiam River; thence downstream in the South Santiam River to its intersection with the North line of the South half of the North half of Section 11, T. 13 S., R. 1 W, WM; thence East to the East line of said Section 11; thence North 1 ¼ mile to the Northwest Corner of Section 1, T. 13 S., R. 1 W., WM; thence East 5 miles; thence North 2 miles; thence East 2 miles to the Northeast Corner of Section 25, T. 12 S., R. 1 E., WM; thence North to the Northeast Corner of Section 1, T. 11 S., R. 1 E., WM; thence Northwesterly in a straight line to the Southeast corner of Section 22, T.10 S., R 1 E., proceeding West along the South boundaries of Sections 22,21,20 to the Southeast corner of Sec 19, T.10 S., R 1 E., proceed northwesterly to the centerline of the south boundary of Section 13, T.10.S., R.1.W., proceed West along the South boundary of Section 13, T.10.S., R.1.W. to the Southwest corner of Section 13, T.10.S., R.1.W., thence North along the Western boundary of said Section 13 to the Northwest corner of said section, thence west to the Northwest corner of Sec 14, T.10.S., R.1.W., thence North along the West boundary of Section 11, T.10.S., R.1.W. to the intersection of said section and the center line of State Highway 226 thence Westerly on Center of State Highway #226 to Main Street in Scio; thence North on said Main Street to the Jefferson-Scio Drive (C.R. #4); thence Westerly on the Center of Jefferson-Scio Drive (C.R. #4) to the Center of the North Santiam River (Linn/Marion County Line); thence Southwesterly on the Center of the North Santiam River to its intersection with the South Santiam River; thence Southeast-erly on the Center of the South Santiam River to the South Line of the Walter Ketchum D.L.C. #42 in Section 10, T. 11 S., R. 2 W., WM; thence South 74° 23' West on said South line to the East Right-of-way line of State highway 20; thence Southeasterly on said East right-of-way line to the Center of Gerig Drive (C.R. #657); thence West on the Center of Gerig Drive (C.R. #657) to the North-South centerline of Section 17, T.11S., R.2W., W.M.; thence South to the Center of Bolhken Drive (C.R. #658); thence West on the Center of Bolhken Drive (C.R. #658) to a point due North of the Northeast Corner of the Creed H. Amos D.L.C. #59, T. 11 S., R. 2 W., WM; thence South to the center of Spicer Drive (C.R. #9); thence

West and North on Spicer Drive (C.R. #9) to Stutzman Drive (C.R. #340); thence West on the Center of Stutzman Drive (C.R. #340) to Goltra Road (C.R. #339); thence South on the Center of Goltra Road (C.R. #339 to State Highway 34; thence West on the Center of State Highway 34 to the East right-of-way line of Interstate Highway 5; thence South on the East line of Interstate 5 to Diamond Hill Drive (C.R. #14); thence East on the center of Diamond Hill Drive (C.R. #14) to Gap Road (C.R. #15); thence due East to the North-South centerline of Section 12, T. 15 S., R. 3 W., WM; thence Southeasterly on a straight line to the point of beginning.

ASA #3 - Sweet Home Ambulance and Fire District ASA

Beginning at the Southwest corner of Section 13, T. 15 S., R. 2 W., WM (being on the South line of Linn County); running thence North, 5 miles to the Northwest corner of Section 25, T. 14 S., R. 2 W., WM; thence East ½ mile; thence North 1/4 mile; thence West ½ mile; thence North 3/4 mile to the Southeast corner of Section 14, T. 14 S., R. 2 W., WM; thence West 1 mile; thence North ½ mile; thence East 1 mile; thence North ½ mile to the Northeast corner of said Section 14; thence West, 3/4 mile; thence North to the Calapooia River; thence upstream of said river to its intersection with the West line of Section 12, T. 14 S., R. 2 W., WM; thence North to the Northwest corner of Section 1, T. 14 S., R. 2 W., WM; thence East, 1 mile to the Southwest corner of Section 31, T. 13 S., R. 1 W., WM; thence North 1 mile; thence West ½ mile; thence North 1 mile; thence West ½ mile; thence North 1 mile; thence East 1 mile to the Northwest corner of Section 19, T. 13 S., R. 1 W., WM; thence North ½ mile, thence East to Noble Slough; thence downstream of said slough to its intersection of the North line of the South half of the South half of Section 10, T. 13 S., R. 1 W., WM; thence East to the South Santiam River; thence downstream in the South Santiam River to its intersection with the North line of the South half of the North half of Section 11, T. 13 S., R. 1 W., WM; thence East to the East line of said Section 11; thence North 1 1/4 miles to the Northwest corner of Section 1, T. 13 S., R. 1 W., WM; thence East 5 miles; thence North 2 miles; thence East 2 miles to the Northeast corner of Section 25, T. 12 S., R. 1 E., WM; thence South to the Southwest corner of Section 19, T. 12 S., R. 2 E., WM; thence East on the South line of Sections 19, 20, and 21, T. 12 S., R. 2 E., WM to the Southeast corner of said Section 21; thence North 4 miles to the Northwest corner of Section 3, T. 12 S., R. 2 E., WM; thence East 4 miles; thence North 2 miles; thence East 2 miles; thence North 3 miles; thence East 3 miles; thence North to the Northwest corner of Section 6, T. 11 S., R. 4 E., WM; thence East 6 miles to the Northeast corner of Section 1, T. 11 S., R. 4 E., WM; thence South to the South line of T. 11 S; thence East along the line (imaginary or real) between T. 11 S and T. 12 S., Ranges 5, 6, 7, 7 1/2 and 8 East, 22 miles, more or less, to the East line of Linn County; thence Southerly on the East line of Linn County to the center of State Highway #20; thence Westerly on the center of State Highway #20 to State Highway #126 (Clear Lake Cutoff); thence Southerly on the center of State Highway #126 to the

South line of Linn County; thence Westerly on the South line of Linn County to the point of beginning.

ASA #4 - Corvallis Fire Department ASA

Beginning at the intersection of the center of the Willamette River and the South line of Section 30, T. 14 S., R. 4 W, WM; running thence East on the South line of Section 30; thence East to the centerline of Cartney Drive (C.R. #224); thence East on the centerline of Cartney (C.R. #224) to the center of the Oregon Electric Railroad right-of-way; thence North on the center of said railroad right-of-way to the centerline of State Highway #34; thence west on the centerline of State Highway #34 to Riverside Drive (C.R. #1); thence North on the centerline of Riverside Drive (C.R. No. 1) to Walnut Drive (C.R. #109); thence West to the center of the Willamette River; thence Southerly on the center of the Willamette River to the point of beginning.

ASA #5 - Lane Rural Fire/Rescue ASA

Beginning at the intersection of the center of the Willamette River and the South line of the north half (N1/2) of the north half (N1/2) of Section 21, T. 15 S, R. 4 W., WM; thence East on the South line of the north half (N1/2) of the north half (N1/2) of sections 21 and 22, T. 15 S, R. 4 W., WM to the Southeast corner of the Northeast quarter of the Northeast quarter of Section 22, T. 15 S, R. 4 W., WM; thence continuing East to the center of Camous Creek; thence Southeasterly up the center of said creek to the intersection with the south line of Section 23, T. 15 S, R. 4 W., WM; thence East on the south line of Sections 23 and 24, T. 15 S, R. 4 W., WM to a point 300 feet west of and parallel with the Westerly right-of-way of Powerline Road (C.R. No. 230); thence Northwesterly parallel to and 300 feet from the Westerly right-of-way of Powerline Road (C.R. No. 230) to the centerline of Diamond Hill Drive (C.R. No. 14); thence Easterly on the centerline of Diamond Hill Drive (C.R. No. 14) to the centerline of Muddy Creek; thence Northerly down the center of Muddy Creek to the intersection with the centerline of Highway 99E; thence northeasterly on the centerline of Highway 99E to the centerline of Cartney Drive (C.R. No. 224); thence West on the centerline of Cartney Drive (C.R. No. 224) to Cartney Park Drive (C.R. No. 224-A); thence West on the South line of sections 29 and 30, T. 14 S., R. 4 W., WM to the center of the Willamette River; thence Southeasterly up the center of the Willamette River to the point of beginning. [Amd 03-483 §1 eff 01/07/04]

ASA #6 - Santiam Ambulance ASA

Beginning at the center of State Highway #226 and center of Camp Morrison Drive (C.R. #830) in Section 8, T. 10 S., R 1 E. WM, Linn County Oregon; thence Westerly on center of

State Highway #226 to Main Street in Scio; thence North on said Main Street to the Jefferson-Scio Drive (C.R. #4); thence Westerly on the center of Jefferson-Scio Drive (C.R. #4) to the center of the North Santiam River (Linn/Marion County Line); thence up the center on the North Santiam River (Linn/Marion County line) to the East line of Section 20, T. 9 S., R 1 E. WM; thence South on the East line of said section to the Southeast corner of the Northeast quarter (NE ¼), of the Southeast quarter (SE ¼) of Section 20, T. 9 S., R 1 E. WM; thence East to the Northeast corner of the Southeast quarter (SE ¼), of the Southwest quarter (SW ¼) of Section 21, T. 9 S., R 1 E. WM; thence South one mile to the Northwest corner of the Southwest quarter (SW ¼) of the Southeast quarter (SE ¼) of Section 28, T. 9 S., R 1 E. WM; thence East one-fourth mile to the Northeast corner of that certain tract of land described in Linn County Deed Records Book 256, Page 336; thence South 15° 44' West 17.36 chains to Southeast corner of that certain tract of land described in Linn County Deed Records Book 256, Page 336 to a point on the North line of Nathan Turner D.L.C. 64 in T. 9 S., R 1 E. WM, where the line divides the Edw. and N. Dougherty farm of 319 acres from the W.M. and Mary Fink farm of 120 acres; thence West on said Donation Land Claim line to the Northwest Corner of the Nathan Turner D.L.C. 64; thence South 5° 24' West along the West line of said Donation Land Claim to the Southwest corner of the Nathan Turner D.L.C. 64 claim; thence Westerly on the center of Valley View Drive (C.R. #803) to the North-South centerline of Section 5, T. 10 S., R 1 E. WM; thence South to the Southwest corner of the Southeast quarter (SE ¼) of said section; thence East on the South line of said Section 5 to the center of State Highway #226; thence Southwesterly along the center of State Highway #226 to the intersection of Camp Morrison Drive (C.R. #830) in Section 8, T. 10 S., R 1 E. WM and the point of beginning.

ASA #7 - Idanha/Detroit Ambulance ASA

Beginning at the intersection of the center of the North Santiam River (being also the Linn/Marion County line) and the East line of Section 29, T. 9 S., R. 4 E., WM; thence South on the Section lines to the Southeast corner of Section 32, T. 10 S., R. 4 E., WM; thence East on the south line of T. 10 S., to the Northwest corner of T. 11 S., R. 5 E; thence South on the West line of T. 11 S., R. 5 E., WM to the Southwest corner of T. 11 S., R. 5 E., WM; thence East on the South line of T. 11 S to the Linn/Jefferson County line; thence North on the Linn/Jefferson County line to the South line of Marion County line; thence West on the Linn/Marion County line to the point of beginning.

ASA #8 - Lyons Ambulance ASA

Beginning at the intersection of the center of the North Santiam River (being also the Linn/Marion County line) and the East line of Section 29, T. 9 S., R. 4 E, WM; thence South on the Section lines to the southeast corner of Section 32, T. 10 S., R. 4 E.,; thence West to the Northeast corner of Section 1,

T. 11 S., R. 3 E., WM; thence South to the Southeast corner of said Section 1; thence West to the Northeast corner of Section 9, T. 11 S., R. 3 E., WM; thence South to the Southeast corner of Section 21, T. 11 S., R. 3 E., WM; thence West to the Northeast corner of Section 30, T. 11 S., R. 3 E., WM; thence South to the Southeast corner of Section 31, T. 11 S., R. 3 E.; thence West to the Northeast corner of Section 4, T. 12 S., R. 2 E., WM; thence South to the Southeast corner of Section 21, T. 12 S., R. 2 E., WM; thence Westerly on the Section lines to the Southwest corner of Section 19, T. 12 S., R. 2 E., WM; thence North on the Range line between Range 1 and 2 East to the Northeast corner of Section 1, T. 11 S., R. 1 E., WM; thence Northwesterly in a straight line to Southeast corner of Section 22, T.10 S., R 1 E., proceeding West along the South boundaries of Sections 22,21,20 to the Southeast corner of Sec 19, T.10 S., R 1 E., proceed northwesterly to the centerline of the south boundary of Section 13, T.10.S., R.1.W., proceed West along the South boundary of Section 13, T.10.S., R.1.W. to the Southwest corner of Section 13, T.10.S., R.1.W., thence North along the Western boundary of said Section 13 to the Northwest corner of said section, thence west to the Northwest corner of Sec 14, T.10.S., R.1.W., thence North along the West boundary of Section 11, T.10.S., R.1.W. to the intersection of said section and the center line of State Highway 226 thence Northeasterly on the centerline of State Highway #226 to the intersection with the South line of Section 5, T. 10 S., R 1 E. WM; thence West on the South line of said Section 5, to the Southwest corner of the Southeast quarter (SE ¼) of said section; thence North on the North-South centerline of Section 5, T. 10 S., R 1 E. WM to the center of Valley View Drive (C.R. #803); thence Easterly on the center of Valley View Drive (C.R. #803) to the Southwest Corner of the Nathan Turner D.L.C. 64; thence North 5° 24' East along the West line of said Donation Land Claim to the Northwest Corner of D.L.C. 64; thence East on the North line of said D.L.C. 64 to the Southeast corner of that certain tract described in Linn County Deed Records Book 256, Page 336, where the line divides the Edw. and N. Dougherty farm of 319 acres from the WM and Mary Fink farm of 120 acres; thence North 15° 44' East 17.36 chains to the Northeast corner of that certain tract described in Linn County Deed Records Book 256, Page 336; thence West one-fourth mile to the Northwest corner of the Southwest quarter (SW ¼) of the Southeast quarter (SE ¼) of Section 28, T. 9 S., R 1 E WM; thence North one mile to the Northeast corner of the Southeast quarter (SE ¼), of the Southwest quarter (SW ¼) of Section 21, T. 9 S., R 1 E. WM; thence West to the Southeast corner of the Northeast quarter (NE ¼), of the Southeast quarter (SE ¼) of Section 20, T. 9 S., R 1 E. WM; thence North on the East line of said Section 20 to the center of the North Santiam River (Linn/Marion County line); thence Easterly upstream on the North Santiam River (Linn/Marion County line) to the point of beginning.

ASA #9 - Sisters Fire Department ASA

Beginning at the intersection of the centerline of State Highway #20 and the East line of Linn County; running thence westerly on the centerline of State Highway #20 to State

Highway #126; thence Southerly on the centerline of State highway #126 to a point due West of the Southwest corner of Section 6, Township 15 South, Range 7 East, Willamette Meridian; thence due East to the East line of Linn County; thence Northerly on the East line of Linn County to the point of beginning.

ASA #10 - Jefferson Ambulance ASA

Beginning at a 1 1/2" pipe, which bears West 2660.50 ft. and South 1093.81 ft. from the most Easterly Corner of the Silas Haight Donation Land Claim No. 55, in Township 10 South, Range 3 West. Thence N 1° 09' E, 332.55 ft.; thence N 75° 29' E, 1119.77 ft.; thence N 34° 30' E, 232.36 ft.; thence S 89° 46' E, 771.83 ft.; thence N 25° 00' E, 973.54 ft.; thence N 18° 28' 08" W, 672.22 ft. to a 3/4" iron pipe on the Southerly right of way of Conser Road (CR 34); thence along said right of way, S 77° 33' 08" E, 46.62 ft. to a point on the Westerly boundary line of the Oregon Electric Railroad right of way; thence along said right of way, S 18° 23' 45" E, 6331.07 ft. on a tangent; thence along said right of way on a 1° 27' 42" curve to the left, the long chord of which bears S 19° 42' 41" E, 180.01 ft. to the North of Section 32; thence East to the Easterly right of way of the Oregon Electric Railroad; and thence Northerly along said Easterly right of way to its intersection with the center of Millersburg Drive (CR 310); thence N 10° 34' 35" W, 1287.05 ft. along the Easterly right of way of the Oregon Electric Railroad; thence N 88° 51' E, 3609.49 ft.; thence Easterly 2350 feet more or less; thence N 89° 47' 30" E, 267.80 ft. to the centerline of Morningstar Road (CR 308); thence N 0° 16' E, along the centerline of Morningstar Road (CR 308) 340 ft. more or less; thence N 89° 11' 30" E, 1273.84 ft.; thence North parallel to the West line of the John Meeker Donation Land Claim No. 60, 1289.8 ft. more or less; thence N 80° 04' E, 650 ft.; thence S 11° 14' E, 426.0 ft.; thence N 80° 04' E, 220 ft. to the Westerly right of way of State Highway right of way; thence Southerly along said right of way and the Westerly right of way of the old Pacific Highway to the Easterly extension of Millersburg Drive (CR 310); thence Easterly to the Easterly right of way of Old Pacific Highway; thence Northeasterly along said Easterly right of way to engineers station 137+63.8; thence S 89° 04' 30" E, 441.76 ft. to the Westerly right of way of the Southern Pacific Railroad; thence southeasterly along said right of way to a point on said right of way which bears S 00° 23' 47" W, 842.35 ft. and S 89° 16' 00" E, 1218.97 ft. from the Northeast corner of the Sarah Farlow Donation Land Claim No. 59 Township 10 South, Range 3 West; thence S 89° 16' 00" E, 60 ft. to the Easterly right of way of the Southern Pacific Railroad; thence Northeasterly along said right of way along the arc of a 3407.87 foot radius curve to the right (the cord of which bears N 14° 50' 30" East 1732.20 ft.) 1751.42 ft. to a 5/8" iron rod at the point of intersection with the Westerly right of way of Interstate Highway I-5; thence Easterly to the Easterly right of way line of Interstate Highway I-5; thence Southerly along the Easterly line of said Freeway to the South line of said John Louderback D.L.C. No. 47; thence East along said Claim line to the Southeast corner thereof; thence S. 22°

W. 14.82 chains; thence S. 65° E. 20 chains to the center of a county road; thence N. 17° E. along the center of said road to a point 20.83 chains South of the North line of the Newton Houston D.L.C. No 48; thence East 32.06 chains to the East point 4.4 chains North of the Southeast corner of said Claim No. 48; thence East 75 chains, more or less, to the East line of Section 35, in T.10S., R.3W., thence South to a point 15 chains North of the Southwest corner of the Northwest quarter of Section 36; thence East to the West line of the John Earl D.L.C. 41 in T.10 S., R.3W., thence North to a point 5.98 chains South of the Northwest corner of said D.L.C. 41; thence East 30.06 chains to a point 25.75 chains West of the East line of said D.L.C. 41; thence South 34.02 chains to the North line of the South half of Sec. 36, T.10 S., R.3 W., thence East to the East line of said D.L.C. 41; thence South 6.23 chains; thence S. 89° 51' E. 10.90 chains to the Southwest corner of Lot 5, in Section 31, in T. 10 S., R.2. W; thence North 2.91 chains; thence S. 71° 10' E. to the Northeast corner of the William H. Basye D.L.C. 41; thence N. 19° 30' E. 11.67 chains; thence S. 64° 30' E. 11.95 chains; thence S. 19° 30' W. 8.37 chains; thence S. 64° 30' E. 24.90 chains; thence S. 71° 15' E. 3.25 chains; thence N. 33° E. 11.03 chains, thence S. 71° 15' E. 45.12 chains to a point of intersection of the Southern boundary line of the D.L.C. of John Y. Streithoff with the Southern boundary line of said T. 10 S., R. 2 W.; thence East along the Southern boundary line of the last named township to the South Santiam River; thence Northerly down said river to the East and West centerline through section 33, T. 10S., R.2 W.; thence West to the East line of said John Y. Streithoff D.L.C. 39; thence South to a point 20.62 chains South of the Northeast corner of said D.L.C. 39; thence West 12.02 chains; thence N. 7° E. 3.50 chains; thence N. 14+1/2° E. 2.50 chains; thence N. 29° E. 12.02 chains; thence North 3.00 chains to a point which is 9.40 chains South of the North line of said D.L.C. 39; thence West 39 chains, more or less, to the centerline of a creek; thence Northerly to a point 3.00 chains North of the South line of the Lewis Cox D.L.C. 44; thence East to the East line of said D.L.C. 44; thence North to the North line of Section 32; thence East to the South Santiam River; thence down said River to its intersection with the North Santiam River; thence continuing down the Santiam River to its intersection with the Willamette River; thence up said Willamette River to a point which bears S. 01° 09' W. of the place of beginning; thence N. 01° 09' E. to the place of beginning.

ASA #11 - Springfield Department of Fire and Life Safety ASA

Part 1. Beginning at the intersection of the center of the Willamette River and the South line of the north half (N1/2) of the north half (N1/2) of Section 21, T. 15 S, R. 4 W., WM; thence East on the South line of the north half (N1/2) of the north half (N1/2) of sections 21 and 22, T. 15 S, R. 4 W., WM to the Southeast corner of the Northeast quarter of the Northeast quarter of Section 22, T. 15 S, R. 4 W., WM; thence continuing East to the center of Camous Creek; thence Southeasterly along the center of said creek to the intersection with the south line of Section 23, T. 15 S, R. 4 W., WM; thence East on the

south line of Sections 23 and 24, T. 15 S., R. 4 W., WM to a point 300 feet west of and parallel with the Westerly right-of-way of Powerline Road (C.R. No. 230); thence Northwesterly parallel to and 300 feet from the Westerly right-of-way of Powerline Road (C.R. No. 230) to the centerline of Diamond Hill Drive (C.R. No. 14); thence Easterly on the centerline of Diamond Hill Drive (C.R. No. 14) to the centerline of Muddy Creek; thence Northerly down the center of Muddy Creek to the intersection with the centerline of Highway 99E; thence northeasterly on the centerline of Highway 99E to the centerline of Cartney Drive (C.R. No. 224); thence East on the centerline of Cartney Drive (C.R. #224) to Rowland Road (C.R. #515); thence continuing East to the West right-of-way line of Interstate Highway 5; thence South on the West right-of-way line of said Highway to the centerline of Diamond Hill Drive (C.R. #14); thence East to the centerline of Interstate Highway 5; thence North on the centerline of Interstate Highway 5 to the centerline of State Highway #228; thence East to the East right-of-way line of Interstate Highway 5; thence South on the East right-of-way line of Interstate Highway 5 to Diamond Hill Drive (C.R. #14); thence East on the centerline of Diamond Hill Drive (C.R. #14) to Gap Road (C.R. #15); thence East on the centerline of Gap Road (C.R. #15) to the North-South centerline of Section 12, T. 15 S., R. 3 W., WM; thence in a straight line to the Southeast corner of Section 14, T. 15 S., R. 2 W., WM, (said corner being on the Linn/Lane County Line); thence West on the South line of said Section 14, (Linn/Lane County line) to the Southwest corner of said Section 14; thence South on the Linn/Lane County line to the Southeast corner of Section 3, T. 16 S., R. 2 W., WM; thence West on the Linn/Lane County line to the center of the Willamette River; thence Northerly down the river to the point of beginning.

Part 2. Beginning at the intersection of the South line of Linn County and the centerline of State Highway #126; thence Northerly on the centerline of State Highway #126 to a point due West of the Southwest corner of Section 6, T. 15 S., R. 7 E., WM; thence due East to the East line of Linn County; thence Southerly on the East line of Linn County to the Southeast corner of Linn County; thence Westerly on the South line of Linn County to the point of beginning.

[Adopted 01-110 §3 eff 06/27/01 (see OAR 333-260-0020 (3.4.b), 333-260-0040 (2)); amd 22-101 §1 eff 07/01/22]

550.340 Alternatives considered to reduce notification and response times

(A) Heavily forested, mountainous terrain and severe weather conditions present difficult access and long response time to ground ambulances. In those situations, when an urgent response is indicated, the PSAP may elect to call the nearest rotary-wing air ambulance or implement the Linn County Search and Rescue Plan

(B) A tiered response system is used to provide the best available patient care while maximizing the available resources.

(C) In some instances, for various reasons, an ambulance service provider from an adjoining county’s ASA could respond more quickly to an incident. In such cases the out-of-county provider may respond within an ASA in Linn County:

(1) if the out-of-county provider has signed a mutual aid agreement with an ASA provider in Linn County; and

(2) if the dispatcher determines that the out-of-county provider is the appropriate choice under the circumstances.

[Adopted 01-110 §3 eff 06/27/01 (see OAR 333-260-0020 (3.4.d), 333-260-0040 (4))]

IV. SYSTEM ELEMENTS

550.400 Authority

LCC 550.400 to 550.480 are adopted to implement OAR 333-260-0020 (3.5) and 333-260-0050 specifically.

[Adopted 01-110 §3 eff 06/27/01 (see OAR 333-260-0020 (3.5), 333-260-0050)]

550.410 System elements; generally

(A) Every ASA provider is required to conform to system elements described in LCC 550.400 through 550.480.

(B) Elements which are specific to individual ASAs are listed in the appropriate tables depicted below. There are no other system elements which are specific to any individual ASA.

[Adopted 01-110 §3 eff 06/27/01 (see OAR 333-260-0020 (3.5), 333-260-0050)]

1. RESPONSE TIMES; NON-EMERGENCY TRANSFERS

550.420 Response times

(A) Notification times for ambulances shall be within the time established and prescribed as the standard by the Area 2 ATAB.

(B) Dispatch to arrival times shall fall within standards depicted in the following table:

DISPATCH-TO-ARRIVAL TIMES:		
AREA	B.L.S	A.L.S
Urban	<4 min. at 90%	<8 min. at 90%
Suburban	<8 min. at 90%	<15 min. at 90%
Rural	<20 min. at 90%	<45 min. at 90%
Frontier	45 min.+	45 min.+

(C) The ASA Providers shall respond within those response times depicted in the table in subsection (B) of this section, subject to inclement weather or other extraordinary conditions.

(D) For purposes of this section, the terms “urban,” “suburban,” “rural,” and “frontier” have the meanings given those terms in OAR 333-200-0010.

(E) Monitoring of notification and response times shall be accomplished by the following: receiving information from the public, dispatch centers (PSAPs), hospitals, pre-hospital care providers, or county EMS administration.

(F) Types of information received include but are not limited to: written or verbal complaints, patient care report forms, radio transmission tapes, notification and response time incident cards, trauma registry forms.

(G) Response times are subject to inclement weather or other extraordinary conditions.

[Adopted 01-110 §3 eff 06/27/01 (see OAR 333-260-0020 (3.5.a), 333-260-0050 (1) (a) and (2))]

550.425 Pre-arranged non-emergency transfers and inter-facility transfers

(A) The ASA providers shall have the right of first refusal for pre-arranged non-emergency transfers and inter-facility transfers within their ASA.

(B) Should the primary ASA provider not be able to accommodate the transfer due to staffing, distance, or care capabilities, the primary ASA provider and transferring hospital will work together to secure appropriate other means of transportation for the patient.

[Adopted 22-101 §1 eff 07/01/22 (see OAR 333-260-0020 (3.5.b), 333-260-0050 (1) (b))]

2. LEVELS OF CARE

550.430 Levels of care

This Chapter establishes the following levels of care for its ASAs:

- (A) basic life support level care;
- (B) intermediate life support level care; and
- (C) advanced life support level care.

[Adopted 01-110 §3 eff 06/27/01 (see OAR 333-260-0020 (3.5.b), 333-260-0050 (1) (b))]

3. PERSONNEL STANDARDS FOR 1ST RESPONSE

550.440 Personnel standards; generally

(A) When operating an ambulance in Linn County, all personnel must meet the requirements of ORS 682.015 to 682.991 and OAR 333-255-0070 (1), (4) or (6).

(B) The practice of staffing an ambulance on a part-time basis with EMTs certified to a higher level of care than is possible at other times does not construe a requirement that the ambulance provide the same level of care on a regular basis.

[Adopted 01-110 §3 eff 06/27/01 (see OAR 333-260-0020 (3.5.c), 333-260-0050 (1) (c))]

550.445 Personnel for first response ambulances; staffing and operating standards

(A) An ambulance operating in Linn County and providing basic life support level care must consist of a qualified driver and one certified EMT or above. The EMT must always be with the patient in the patient compartment of the ambulance.

(B) An ambulance operating in Linn County and providing intermediate life support level care must consist of one certified EMT and one certified EMT-Intermediate. The EMT-Intermediate must always be with the patient in the patient compartment of the ambulance intermediate level care is required or rendered.

(C) An ambulance operating in Linn County and providing advanced life support level care must consist of an EMT and a Paramedic, or an RN, PA or physician who is trained in pre-hospital emergency care must be in the patient compart-

ment during transport of a patient requiring advanced life support care.

- (1) The EMT, RN, PA or physician must:
 - (a) not work on an ambulance when:
 - (i) that person has consumed any alcohol beverages within the eight hours prior thereto;
 - (ii) the EMT, RN, PA or physician is in any way impaired by the ingestion of alcohol; and
 - (b) Not be taking any medications that impair the giving of proper patient care.
- (2) If the driver is a certified EMT, the driver must:
 - (a) Have a valid driver's license;
 - (b) Have three years of licensed driving experience;
 - (c) Be knowledgeable in the safe operation of the ambulance;
 - (d) Operate the ambulance in compliance with ORS 820.300 through 820.380 and any other applicable motor vehicle statutes;
 - (e) Complete an Authority approved emergency operators course of instruction;
 - (f) Not have had his/her EMT certification denied, suspended or revoked for any of the reasons specified in ORS 682.175(2) within the last 10 years, unless authorized by the Division;
 - (g) Not have been convicted of a felony within the past 10 years;
 - (h) Not have been convicted of driving under the influence in the past three years;
 - (i) Not have consumed any alcohol beverages in the eight hours prior to operating an ambulance, nor when the driver is in any way impaired by the ingestion of alcohol; and
 - (j) Not be taking any medications that impair the safe operation of the ambulance.
- (3) If the driver is not a certified EMT, the driver must have:
 - (a) A current American Heart Association "Level C" or American Red Cross "Basic Life Support for the Professional Rescuer" CPR course completion document; and
 - (b) The ability to properly assist in extricating, lifting and moving a patient.

(4) An RN, PA or physician staffing an ambulance providing advanced level life support care must have:

- (a) A current American Heart Association "Level C" or American Red Cross "Basic Life Support for the Professional Rescuer" CPR course completion document;
- (b) A current ACLS and pediatric ALS course completion document and either a PHTLS, BTLS, TEAM or TNCC course completion document. The TEAM and TNCC must include a supplemental pre-hospital rapid extrication training session;
- (c) The ability to properly assist in extricating, lifting and moving a patient;
- (d) The knowledge to properly operate all pre-hospital care equipment; and
- (e) Physician-signed standing orders.

The Paramedic must always be with the patient in the patient compartment of the ambulance when ALS care is required or being rendered.

[Adopted 01-110 §3 eff 06/27/01 (see OAR 333-255-0070 (6), 333-260-0020 (3.5.c), 333-260-0050 (1) (c)); amd 22-101 §1 eff 07/01/22]

550.447 Personnel for first response vehicles; staffing and operating standards

Personnel for first response vehicles shall meet at least the following standard: a first response vehicle operating in Linn County must have a first responder aboard at the time of the response.

[Adopted 01-110 §3 eff 06/27/01 (see OAR 333-255-0070 (6), 333-260-0020 (3.5.c), 333-260-0050 (1) (c))]

550.450 Medical supervision standards

(A) Each EMS agency utilizing an EMT shall be supervised by a physician licensed under ORS 677 who is actively registered and in good standing with the Board of Medical Examiners as a medical doctor (MD) or doctor of osteopathic medicine (DO). The physician must also be approved by the Board of Medical Examiners as a medical director.

(B) Each EMS agency or ambulance service may have its own medical director. The medical director shall:

(1) comply with the requirements listed in OAR 847-35-0025:

(2) hold at least one meeting a year with the EMTs affiliated with the ambulance services;

(3) designate an EMT coordinator who shall conduct case reviews in the physicians absence and send summaries of the reviews and problems identified and proposed problem resolution to the physician; and

(4) provide or authorize at least one case review meeting for all EMTs quarterly.

(C) The following table depicts the medical resource hospitals for each ASA:

Medical Resource Hospitals for Linn County ASAs	
ASA #	Institution
1	Albany General Hospital
2	Lebanon Community Hospital
3	Lebanon Community Hospital
4	Good Samaritan Hospital
5	Sacred Heart Hospital
6	Santiam Memorial Hospital
7	Santiam Memorial Hospital
8	Salem Hospital
9	St Charles Medical Center
10	Salem Hospital
11	McKenzie-Willamette Hospital

[Adopted 01-110 §3 eff 06/27/01 (see OAR 333-260-0020 (3.5.d), 333-260-0050 (1) (d))]

550.460 Training standards

(A) The following table depicts the primary institutions of learning for ambulance service providers in Linn County:

Primary (P) and Secondary (S) Institutions of Learning for Linn County ASA's	
ASA #	Institution(s)
1	(P) Linn-Benton Community College
2	(P) Linn-Benton Community College
3	(P) Linn-Benton Community College
4	(P) Linn-Benton Community College
5	(P) Lane Community College
6	(P) Linn-Benton Community College (S) Chemeketa Community College

7	(P) Chemeketa Community College
8	(P) Linn-Benton Community College (S) Chemeketa Community College
9	(P) Central Oregon Community College
10	(P) Linn-Benton Community College
11	(P) Lane Community College

(B) If these community colleges do not offer a particular level of training, an individual may be required to obtain that level of training at another institution which would be further away.

(C) Each EMS provider in Linn County shall obtain and maintain opportunities for continuing medical education which meets re-certification standards as specified by the Oregon Health Authority. EMT re-certification and continuing medical education shall be obtained through in-house training programs and seminars that are sponsored by local EMS agencies or teaching institutions. When classes are not available within the county, it may require an individual to augment their continuing education by attending classes, workshops and conferences outside of the ASA or Linn County.

(D) EMTs are required to meet and maintain the certification standards set forth in this code and the rules and regulations of the Oregon Health Authority.

[Adopted 01-110 §3 eff 06/27/01 (see OAR 333-260-0020 (3.5.g), 333-260-0050 (1) (g)); amd 22-101 §1 eff 07/01/22]

4. EQUIPMENT STANDARDS

550.470 Patient care equipment standards

(A) Patient care equipment must meet or exceed the Division's requirements as specified in ORS 682.015 to 682.991, OAR 333-260-0020 (3.5.), 333-260-0050 (1) (e), and 333-255-0070 (2), (3), (5) and (7).

(B) The ambulance service provider shall maintain a list of equipment for their ambulances, which shall be furnished to the Board upon their request.

[Adopted 01-110 §3 eff 06/27/01 (see OAR 333-260-0020 (3.5.e), 333-260-0050 (1) (e))]

550.475 Vehicle standards

(A) All ambulances must either be a Type I, Type II, or Type III, and be licensed by the Oregon Health Authority.

(B) All ambulances must meet or exceed the requirements as set forth in ORS 682.015 to 682.991 and OAR 333-255-0060.

(C) The ambulance provider shall provide to the Board at its request an up-to-date list of each of the provider’s ambulances.

[Adopted 01-110 §3 eff 06/27/01 (see OAR 333-260-0020 (3.5.f), 333-260-0050 (1) (f)); amd 22-101 §1 eff 07/01/22]

5. QUALITY ASSURANCE PROGRAM

550.480 Quality assurance program established

In order to ensure the delivery of efficient and effective pre-hospital emergency medical care, an EMS quality assurance program is hereby established.

(A) The structure of the quality assurance program is set forth in LCC 550.700 to 550.710.

(B) The process implementing the quality assurance program is set forth in LCC 550.720 to 550.750.

(C) The sanctions imposed on non-compliant personnel and providers to assure a program of quality is set forth in LCC 550.800 to LCC 550.900.

[Adopted 01-110 §3 eff 06/27/01 (see OAR 333-260-0020 (3.5.h), 333-260-0050 (3))]

V. COORDINATION

550.500 Authority

LCC 550.500 to 550.580 are adopted to implement OAR 333-260-0020 (3.6) and 333-260-0060 specifically.

[Adopted 01-110 §3 eff 06/27/01 (see OAR 333-260-0020 (3.6), 333-260-0060)]

A. INPUT PROCESS

550.505 Administration responsibility

The Linn County ASA Advisory Committee is the principal entity to receive and consider input from pre-hospital care consumers, providers, and the medical community.

[Adopted 01-110 §3 eff 06/27/01 (see OAR 333-260-0020 (3.6.a), 333-260-0060)]

550.510 Input process for consideration by the County

Any pre-hospital care consumer, provider, or member of the medical community may submit in writing to the Linn County ASA Committee information for the development and maintenance of the ASA Plan in accordance with LCC 550.720 and 550.725.

[Adopted 01-110 §3 eff 06/27/01 (see OAR 333-260-0060 (1))]

B. MUTUAL AID AGREEMENTS

550.515 Mutual aid agreements

(A) Each ambulance service provider shall sign a mutual aid agreement with the other providers in the County and with other providers in adjoining counties to respond with needed personnel and equipment in accordance with the agreement. The mutual aid agreement shall substantially conform to the following:

LINN COUNTY
AMBULANCE SERVICE AREA
MUTUAL AID AGREEMENT

WHEREAS the Parties hereto maintain and operate Emergency Medical Services for the purpose of necessary lifesaving services within their respective service areas; and

WHEREAS the parties recognize the possibility that numerous medical responses and/or disaster conditions in one Party’s area could create insufficient resources to allow for effective operation of Emergency Medical Services in that area; and to accommodate those times when one Party is in need of emergency assistance; and

WHEREAS the parties recognize that one Party may be more advantageously placed to provide effective Emergency Medical Services in the other Party’s service area due to distance, road, or weather conditions;

NOW THEREFORE, it is agreed as follows:

(A) Both parties agree to furnish personnel and equipment to the other Party when requested by competent authority,

provided assisting Party has available adequate personnel and equipment to reasonably provide assistance,

(B) The Parties agree to maintain compatible radio communication capabilities with each other.

(C) It is mutually agreed and understood that this agreement shall not relieve either Party of the responsibility for Emergency Medical Services within its own district, nor does this agreement create any right in, or obligation to, third parties by either Party which would not exist in the absence of this agreement. It is the intent of this agreement to provide reasonable assistance only, and not primary responsibility.

(D) It is agreed that this agreement for mutual aid shall constitute the sole consideration for the performance hereof, and that neither Party shall be obligated to reimburse that other for use of equipment or personnel. During the course of rendering aid, the personnel and equipment of each party shall be at risk of that Party. Each Party shall protect its personnel performing under this agreement by adequate workman's compensation insurance. Each Party shall obtain and maintain in full force and effect adequate public liability and property damage insurance to cover claims for injury to persons or damage to property arising from such Party's performance of this agreement, and all right and subrogation right against each other, and against the agents and employees of each other for liability and damages covered, unless to do so would void such insurance coverage.

(E) This agreement shall be and remain in full force and effect from and after the date of execution set opposite the signature of each Party until terminated or modified. This agreement may be modified at any time by mutual consent of the Parties, and terminated by Party upon reasonable notice.

(F) In the event of a Presidential Disaster Declaration, or the Conflagration Act being invoked, this agreement shall not preclude or bar providers from claim for, or collection of, any type of reimbursement, payment, or restitution.

IN WITNESS WHEREOF, the Parties have caused this agreement to be executed on the day set opposite the respective signature of each; said execution having been heretofore first authorized in accordance with law.

[Signatures of the parties and dates]

(B) All mutual aid agreements will be reviewed annually and modified as needed by mutual consent of all parties.

(C) The original agreements shall be filed with the County Clerk. Copies thereof shall be set forth in the ASM.

[Adopted 01-110 §3 eff 06/27/01 (see OAR 333-260-0020 (3.6.c), 333-260-0060 (2))]

C. DISASTER RESPONSE

550.520 Disaster response; generally

The Committee shall coordinate the EMS medical function of disaster planning with any formal disaster management plan, including LCC Chapter 590 (Emergency Procedures Code) and the Linn County Emergency Operations Plan (EOP).

[Adopted 01-110 §3 eff 06/27/01 (see OAR 333-260-0020 (3.6.d), 333-260-0060 (3))]

550.525 County resources other than ambulances

When resources other than ambulances are required for the provision of emergency medical services during a disaster, a request for additional resources shall be made through the appropriate PSAP to the Emergency Management Agency.

[Adopted 01-110 §3 eff 06/27/01 (see OAR 333-260-0020 (3.6.d.A), 333-260-0060 (3))]

550.530 Out of county resources

When resources from outside Linn County are required for the provision of emergency medical services during a disaster, a request for those resources shall be made through the appropriate PSAP to the County Emergency Management Agency.

[Adopted 01-110 §3 eff 06/27/01 (see OAR 333-260-0020 (3.6.d.B), 333-260-0060 (3))]

550.535 Mass Casualty Incident (MCI) Plan

(A) Each Ambulance Service Area provider serving Linn County shall develop and maintain a Multiple Patient Scene (MPS) Protocol and a Mass Casualty Incident (MCI) Plan that conforms to guidelines established in the Area 2 Trauma Care System Plan published by the Authority. The Area 2 Trauma Care System Plan is maintained by the Area 2 Trauma Advisory Board, which has been established in accordance with ORS 421.609 and OAR 333-200-0080. The purpose of the MPS Protocol is to have guidelines for the management of scenes with multiple patients yet not sufficient in scope to warrant utilization of the MCI Plan.

(B) The purpose of the Mass Casualty Incident (MCI) Plan is to provide guidance to EMS

response personnel in the coordination of response activities relating to mass casualty incidents in Linn County.

(C) The MCI Plan is intended for use when any single incident or combination of incidents depletes the resources of any single provider or providers during the normal course of daily operations or at the request of the Health Officer.

(D) MCI Plan and the MPS Protocol may be consolidated into one document.

(E) A copy of each ASA’s MCI Plan or any consolidated ASA Plans shall be included in the Linn County ASM, which shall be made available in the Linn County Sheriff’s Dispatch Office.

(F) The Committee will periodically review the medical component of each MCI Plan and direct any revisions that must be made to meet the county’s need.

[Adopted 01-110 §3 eff 06/27/01 (see OAR 333-260-0020 (3.6.d.C), 333-260-0060 (3)); amd 22-101 §1 eff 07/01/22]

D. PERSONNEL AND EQUIPMENT RESOURCES

550.540 Personnel and equipment resources

(A) Generally additional personnel and equipment resources are described in LCC 550.445 to 550.475.

(B) In summary the personnel and equipment resources generally include:

- (1) Search and rescue;
- (2) Specialized rescue;
- (3) Extrication; and
- (4) Hazardous materials.

[Adopted 01-110 §3 eff 06/27/01 (see OAR 333-260-0020 (3.6.e), 333-260-0060 (4))]

550.545 Hazardous materials response resource

Hazardous materials response resources are available from the following agencies. The telephone numbers of these agencies are on file with the Dispatch Centers. (PSAPs) serving Linn County Ambulance Services Areas.

(A) Oregon Emergency Response System (OERS);

(B) CHEMTREC;

(C) Albany Fire Department;

(D) Lebanon Fire Department; and

(E) Sweet Home Ambulance and Fire District.

[Adopted 01-110 §3 eff 06/27/01 (see OAR 333-260-0020 (3.6.e.A), 333-260-0060 (4) (a))]

550.550 Search and rescue resource

Search and rescue resources are available from the Linn County Sheriffs Office.

[Adopted 01-110 §3 eff 06/27/01 (see OAR 333-260-0020 (3.6.e.B), 333-260-0060 (4) (b))]

550.555 Specialized rescue resource

Specialized rescue resources are available from the following agencies. The telephone numbers of these agencies are on file with the Dispatch Centers (PSAPs) serving Linn County Ambulance Service Areas.

(A) Linn County Sheriff’s Office;

(B) Albany Fire Department;

(C) Lebanon Fire District;

(D) Sweet Home Ambulance and Fire District;

(E) Harrisburg Fire District;

(F) Jefferson Fire District;

(G) Stayton Fire District; and

(H) Eugene/Springfield Fire.

[Adopted 01-110 §3 eff 06/27/01 (see OAR 333-260-0020 (3.6.e.C), 333-260-0060 (4) (c)); amd 22-101 §1 eff 07/01/22]

550.560 Extrication resource

Extrication resources are available from all local fire departments. The telephone numbers of these agencies are on file with the dispatch centers (PSAPs) serving Linn County Ambulance Services Areas.

[Adopted 01-110 §3 eff 06/27/01 (see OAR 333-260-0020 (3.6.e.D), 333-260-0060 (4) (d))]

F. EMERGENCY COMMUNICATIONS AND SYSTEM ACCESS

550.565 Telephone

(A) There is one Primary PSAP located in Linn County. It is located in the Linn County Sheriff’s Office in Albany.

(B) Persons having access to telephone service will have access to the Primary PSAP by dialing 9-1-1.

(C) Upon receipt of a request, all emergency service providers in Linn County, including fire and ambulance, are dispatched by the Dispatch Centers (PSAPs).

[Adopted 01-110 §3 eff 06/27/01 (see OAR 333-260-0020 (3.6.f.A), 333-260-0060 (5) (a))]

550.570 Dispatch procedures

(A) Upon receipt of a request the appropriate emergency service providers, including fire, police or ambulance personnel shall be notified by the primary or secondary PSAP dispatcher the notification time established by the Area 2 Trauma Advisory Board for receipt of a life threatening call.

(B) The dispatcher will endeavor to obtain from the caller, and relay to the first responders the following:

- (1) Location of the incident;
- (2) Nature of the incident; and
- (3) Any specific instructions or information that may be pertinent to the incident.

(C) EMS personnel shall inform the dispatcher by radio when any of the following occurs:

- (1) In-service;
- (2) En route to scene or destination and type or response;
- (3) Arrival on scene or destination;
- (4) Transporting patient(s) to hospital or medical facility, the number of patients, and name of facility; and
- (5) Arrival at receiving facility.

(D) Ambulance personnel shall inform the receiving hospital at the earliest possible time of the following:

- (1) Unit identification number;
- (2) Age and sex of each patient;
- (3) Condition and chief complaint of the each patient;
- (4) Vital signs of each patient;
- (5) Treatment rendered; and
- (6) Estimated time of arrival.

[Adopted 01-110 §3 eff 06/27/01 (see OAR 333-260-0020 (3.6.f.B), 333-260-0060 (5) (b))]

550.575 Radio system

(A) The PSAP shall:

(1) restrict access to authorized personnel only;

(2) meet state fire marshal standards;

(3) maintain radio consoles capable of communication directly with all first response agencies dispatched by them using the most current frequencies found in the ASM;

(4) maintain radio logs which contain all information required by the Federal Communications Commission and Oregon Revised Statutes;

(5) utilize plain English; and

(6) be equipped with a back-up power source capable of maintaining critical functions of the center.

(B) The ambulance service provider shall equip and maintain 60 watt or greater, multi-channel radios in each ambulance that allows for the transmission and reception using the most current frequencies found in the ASM.

(C) Each ambulance crew shall have one five (5) watt, portable hand-held radio with a minimum of two (2) channel capability.

(D) All ambulances in County shall be equipped to communicate on the following frequencies Linn: 155.340 (HEAR), 155.400 (ATAB #2 Medical Resource). Unless specifically determined by the nature of the call (i.e., non-emergency patient transfer, etc.), the highest level of ambulance staffing available at that time shall be dispatched. Other resources (police, fire) will be dispatched as deemed appropriate.

(E) Alternate methods of communication between ambulances and dispatchers. While primary communication between ambulances and the dispatchers is normally by means of VHF radio communications, as described above, conditions may necessitate alternate methods of communicating. Such communications may employ cellular telephones, mobile data terminals, or other methods and equipment as may be necessary.

[Adopted 01-110 §3 eff 06/27/01 (see OAR 333-260-0020 (3.6.f.C), 333-260-0060)]

550.580 Emergency medical services dispatch training

(A) Linn County EMS dispatchers must successfully complete an Emergency Medical Dispatch (EMD) training course as approved by the Oregon Office of Emergency Management and the Department of Public Safety Standards and Training.

(B) All EMS dispatchers are encouraged to attend any class, course or program which will enhance their dispatching abilities and skills.

[Adopted 01-110 §3 eff 06/27/01 (see OAR 333-260-0020 (3.6.f.D), 333-260-0060 (5) (c)); amd 22-101 §1 eff 07/01/22]

VI. PROVIDER SELECTION

550.600 Authority

LCC 550.600 to 550.650 are adopted to implement OAR 333-260-0020 (3.7) and 333-260-0070 specifically.

[Adopted 01-110 §3 eff 06/27/01 (see OAR 333-260-0020 (3.7), 333-260-0070)]

550.610 Authority for ambulance service area assignments

(A) The Board is the body having sole authority to assign an ASA within Linn County in compliance with ORS 682.015 to 682.991. Applications by new providers and requests for assignment change or revocation will be considered for approval if approval of the application will improve efficient service delivery and benefit public health, safety and welfare.

(B) Cities have authority to develop and apply ambulance licensing ordinances within their jurisdictional boundaries, and nothing in this Chapter is intended to obviate that authority.

(C) An amendment to this Chapter affecting an assignment changes shall comply with LCC 550.600 to 555.650 and 550.720.

[Adopted 01-110 §3 eff 06/27/01 (see OAR 333-260-0020 (3.7.a), 333-260-0070 (1))]

550.612 Licensing requirements

No ambulance service provider shall be granted authority to operate within Linn County unless that provider is properly licensed by the Authority.

[Adopted 01-110 §3 eff 06/27/01 (see OAR 333-260-0020 (3.7.a), 333-260-0070 (1)); amd 22-101 §1 eff 07/01/22]

550.615 Initial assignment of existing ambulance service providers

(A) After the effective date of this Chapter, the Board shall give notice to the current in-place providers and give public notice that the current in-place provider shall continue in their present assignments. The current provider assigned to the area must meet the standards contained in this Chapter, specifically those standards outlining efficiency and effectiveness.

(B) In the event that an ASA provider is unable to comply with the standards promulgated for the ASA by this Chapter, the provider will notify the Board in writing of its inability to comply and identify which standards are involved. The Board will determine if other qualified providers are available for the ASA who can comply with the standards. If the Board determines that no other qualified providers are available who can comply with the standards, the Board will petition the Division for a variance from the standards so that continuous ambulance service may be maintained in the ASA by the existing provider.

[Adopted 01-110 §3 eff 06/27/01 (see OAR 333-260-0020 (3.7.a), 333-260-0070 (1))]

550.620 Reassignment of an ASA

In the event that a reassignment of an ASA is necessary, the Committee shall make a written recommendation to the Board. To support the recommendation, the Committee shall develop appropriate criteria, utilizing the selection process described in this Chapter to be presented to the Board for consideration or action by the Board.

[Adopted 01-110 §3 eff 06/27/01 (see OAR 333-260-0020 (3.7.b), 333-260-0070 (1))]

550.630 Application process for applying for an ASA

(A) Procedures set forth in this subsection briefly describe the process for application for and approval of an ASA and include:

(1) An application filed with the Board for an ASA. Such filing may be initiated by:

(a) petition filed by a prospective ASA provider; or

(b) by resolution of the Board of Commissioners.

(2) Upon receipt of a petition or issuance of a resolution, the Board shall assign the petition or resolution to the ASA Advisory Committee.

(3) The ASA Advisory Committee shall:

(a) review all information pertinent to the petition or resolution;

(b) make a recommendation on the petition or resolution; and

(c) make written findings supporting its recommendation.

(4) The Committee shall submit the recommendation and findings to the Board.

(5) The Board shall conduct a public hearing and take final action on the petition or resolution.

(B) In developing its recommendation, the Committee shall comply with ORS 682.015 to 682.991 and its findings must demonstrate that the petition or resolution:

(1) Substantially improves ambulance response time, quality and level of services to the proposed area without adversely impacting the existing emergency medical response system;

(2) Is supported by a call volume in the proposed service area that is sufficient to financially justify the service provided, or is otherwise supported by financial soundness; and

(3) Does not jeopardize the financial ability or other ambulance service providers to provide efficient service to the remainder of Linn County. Existing and proposed ambulance service providers shall make available information necessary for the Committee to make a recommendation. The information shall include, but not be limited to, run logs, physician advisor correspondence, audit reports, personnel training records, procedure manuals, and equipment inventories. In the case of a proposed service provider, records, references, and audit reports may be requested in order to determine qualifications and experience.

[Adopted 01-110 §3 eff 06/27/01 (see OAR 333-260-0020 (3.7.c), 333-260-0070 (2))]

550.640 Notification of vacating an ASA

In the event that an ASA provider wishes to vacate an ASA assigned to that provider, the provider shall provide at least sixty (60) days written notice to the Board. The ASA provider must provide notification in accordance with the provisions of the initial service agreement or contract.

[Adopted 01-110 §3 eff 06/27/01 (see OAR 333-260-0020 (3.7.d), 333-260-0070 (3))]

550.650 Maintenance of level of service

(A) In the event that an ASA provider is unable to comply with the standards promulgated for the ASA by this Chapter, the provider will notify the Board in writing of its inability to comply and identify which standards are involved.

(B) The Board will determine if other qualified providers are available for the ASA who can comply with the standards. If the Board determines no other qualified providers are available it will apply to the Division for a variance under ORS 682.285 for a variance from the standards so that continuous ambulance service may be maintained, by the existing provider, in the ASA.

[Adopted 01-110 §3 eff 06/27/01 (see OAR 333-260-0020 (3.7.e), 333-260-0070 (4))]

VII. ASA PLAN ADMINISTRATION PROCESS

550.700 Authority

LCC 550.700 to 550.750 are adopted to implement OAR 333-260-0020 (3.5.i, j, and k) and 333-260-0050 (3) and 333-260-060 (1) specifically.

[Adopted 01-110 §3 eff 06/27/01 (see OAR 333-260-0020 (3.5.k), 333-260-0050 (3))]

A. ADMINISTRATION ENTITY

550.705 Linn County Ambulance Service Area Advisory Committee established

(A) The Linn County Ambulance Service Area Advisory Committee (Committee) is hereby established and shall be composed of nine members:

Name	# of Members
Ambulance service medical director	1
Linn County Health Department	1
Ambulance service provider	2
Law enforcement representative	1
9-1-1 Center representative	1
Medical facility representative	1
Fire department/district representative	1
Public member	1

(B) Members of the Committee shall be appointed by the Board for a two year term, except that the initial term for the ambulance service director, one ambulance service provider, the medical facility representative, and the fire department/district representative shall be appointed for one year and thereafter, those positions shall each be appointed for a two year term. This arrangement is made to ensure continuity of the of the Committee.

(C) The Committee is subject to LCC Chapter 400 (Board, Commission, and Committee Code), except as expressly provided otherwise in this Chapter.

(D) The Committee is an advisory body to the Board.

(E) The Committee shall serve the Board in a manner conforming to this Chapter.

[Adopted 01-110 §3 eff 06/27/01 (see OAR 333-260-0020 (3.5.i and 3.6.a), 333-260-0050 (3), 333-260-0060 (1))]

550.710 Purposes of the Committee

The purposes of the Committee include:

(A) to ensure the best quality of delivery of the most efficient and effective pre-hospital emergency care possible with the available resources;

(B) to reduce needless attention by state regulatory agencies to problems that can be resolved locally;

(C) to increase local awareness of potential problems that may exist; and

(D) to increase the awareness of ambulance medical directors regarding area concerns and activities.

550.715 Duties and functions of the Board and of the Committee

(A) Generally, the Committee, subject to the Board, is the principal entity with the following duties and functions:

(1) to administer this Chapter;

(2) to accept written proposals for amendments to this Chapter;

(3) to receive and consider input from pre-hospital care consumers, providers, and the medical community as set forth in LCC 550. 510 and 550.715;

(4) to develop and implement a quality assurance program which monitors compliance with:

(a) pertinent statutes, ordinances and rules; and

(b) standards for pre-hospital provider notification, response, and patient care; and

(5) to provide for problem resolution and legal sanctions for non-compliant personnel or providers of the plan provisions.

(B) The principal function of the Committee shall be to monitor the EMS system within Linn County.

(C) The Committee shall be responsible for ensuring compliance to established standards and system issues and endeavor to ensure the best quality of service in Linn County. This may be accomplished by frequent case review, peer review, and periodic review by the medical directors and/or ambulance governing bodies (see respective Provider Profiles for definitions of governing bodies). The Committee will be activated following notification of receipt by the Board of a written concern, or when deemed appropriate by seven or more members of the Committee.

(D) The Committee shall submit a brief written report of its activities or recommendations periodically to the Board.

[Adopted 01-110 §3 eff 06/27/01 (see OAR 333-260-0020 (3.5.), 333-260-0050)]

**B. COMMUNITY INPUT AND PLAN
AMENDMENT PROCESSES**

550.720 Input process for consideration by the County

(A) Review and consideration of information from any pre-hospital care consumer, provider, or member of the medical community for the development and maintenance of the ASA Plan shall initially be performed by the Linn County ASA Committee.

(B) Any information submitted by any pre-hospital care consumer, provider, or member of the medical community shall address only those elements identified in OAR 333-26-0000 to 333-260-0070.

(C) The input provided by consumers, providers, or the medical community may be submitted to any member of the Committee. The member shall then present the idea or suggestion in writing to the Committee. The Committee shall review the matter and make a recommendation thereon to the Board. The committee shall not have access to private medical records unless lawfully waived.

[Adopted 01-110 §3 eff 06/27/01 (see OAR 333-260-0060 (1))]

550.725 Amendments to this Chapter

(A) The Board is the sole body having authority to amend this Chapter including amendments seeking changes of assignment other than voluntary termination.

(B) If the Board receives a petition seeking an amendment to this Chapter, the Board shall forward the petition to the Committee for its initial review and recommendation. Upon completing its review, the Committee shall make and forward its recommendation on the petition to the Board. The Board shall then take final action on the recommendation.

(C) Prior to adopting or amending the plan described in LCC 550.005 (A), the Board shall notify each person, city or district that notified the county that it wants to be consulted prior to such adoption or amendment;

(D) The Board will seek advice from such persons, cities and districts with regard to the plan

and the boundaries of any ambulance service areas established under the plan; and

(E) That after such consultation, if the Board amends the plan, the Board shall amend it in the same manner as the Board adopts non-emergency ordinances.

[Adopted 01-110 §3 06/27/01; (see OAR 333-260-0020 (3.8))]

C. COMPLAINT REVIEW PROCESS

550.730 Complaint review process

(A) Complaints and concerns regarding violation of this Chapter, or involving system operations (including but not limited to such matters as changing protocols to address recurring problems), or questions involving the provisions of pre-hospital care, shall be submitted in writing to the Committee.

(B) Following review and consideration by the Committee, the Committee shall make a recommendation on the matter to the Board.

[Adopted 01-110 §3 eff 06/27/01 (see OAR 333-260-0020 (3.6.b), 333-260-0060)]

D. SANCTION HEARING PROCESS BEFORE THE BOARD

550.750 Hearing procedures

(A) A person receiving a notice of sanction suspension or revocation under LCC 550.800 to 550.850 may request a hearing before the Board by filing with the Board a written request for a hearing within fourteen (14) days of the date of the notice as provided in LCC 550.840 (E), setting forth in specific detail the reasons for the hearing and the issues requested to be reviewed.

(B) The filing of a request for hearing shall stay the action, pending the hearing and final determination of the decision, unless, in the sole discretion of the Board, the stay could reasonably result in a hazard to the public safety.

(C) The Board shall set a time and place for the hearing. The hearing shall be initiated not more than 30 days following the filing of the request for hearing. Within fourteen (14) days

after the conclusion of the hearing, the Board shall affirm, reverse or modify its original decision.

[Adopted 01-110 §3 06/27/01]

VIII. SANCTIONS

550.800 Authority

LCC 550.800 to 550.850 are adopted to implement OAR 333-260-0020 (3.5.k) and 333-260-0050 specifically.

[Adopted 01-110 §3 eff 06/27/01 (see OAR 333-260-0020 (3.5.k), 333-260-0050 (3))]

550.810 Sanctions for non-compliant personnel or providers

(A) The Board may suspend or revoke, with or without conditions, the assignment of an ASA pursuant to LCC 550.840.

(B) Further sanctions for non-compliant personnel or providers are set forth in LCC 550.820 and 550.900.

[Adopted 01-110 §3 eff 06/27/01 (see OAR 333-260-0020 (3.5.k), 333-260-0050 (3) (e))]

550.820 Public nuisance declared

In addition to the penalties provided in this Chapter, non-compliance with the following provisions is declared to be a public nuisance and may be regarded as such in all actions, suits, or proceedings:

- (A) LCC 550.440 (A);
- (B) LCC 550.445;
- (C) LCC 550.450;
- (D) LCC 550.460 (D);
- (E) LCC 550.470;
- (F) LCC 550.475;
- (G) LCC 550.515;
- (H) LCC 550.535;
- (I) LCC 550.580; and
- (J) LCC 550.650.

[Adopted 01-110 §3 eff 06/27/01 (see OAR 333-260-0020 (3.5.k), 333-260-0050)]

550.830 Problem resolution

(A) Any person who has a concern with the administration of emergency medical services may refer that concern to the respective service provider, medical director or dispatch supervisor.

(B) Any person who believes that an emergency medical provider is not complying with this Chapter or the rules and regulations governing that provider may refer that concern to the Board. To resolve such problem, the Board may seek background data and recommendations from the Committee.

[Adopted 01-110 §3 eff 06/27/01 (see OAR 333-260-0020 (3.5.k), 333-260-0050)]

550.840 Suspension or revocation of an ASA

(A) In addition to any actions or sanctions at law and in this Code, the Board has authority to review the record of a service provider and to initiate and order the sanctions in this section.

(B) *Suspension or revocation.* The Board may suspend or revoke the assignment of an ASA with or without conditions. The suspension or revocation, with or without conditions, of an ASA assignment shall comply with this subsection.

(1) Upon written recommendation of the Committee, or by resolution of the Board, the Board may suspend or revoke, with or without conditions, the assignment of an ASA upon a finding that the provider has:

(a) willfully violated provisions of an ordinance, this Chapter or provisions of State or Federal laws and regulations; or

(b) materially misrepresented facts or information given in the application for assignment of an ASA or as part of the review of the performance of the service furnished by the provider.

(C) *Revocation and reassignment.* The Board may revoke and reassign the area to another provider if:

(1) there is evidence that the existing provider is not:

(a) meeting minimum standards, or

(b) providing minimum response times to their assigned area; or

(2) another provider can improve efficient service delivery and benefit public health, welfare and safety.

(D) In lieu of the suspension or revocation, without conditions, of the assignment of an ASA, the Board may order that the violation be corrected and make the suspension or revocation

subject to compliance with conditions stated in the order, within the period of time stated in the order. If the holder of the assignment fails to take corrective action within the time required, the Board shall notify the holder that the assignment is suspended or revoked upon receipt of the notice.

(E) Notice of the Board's action shall be provided to the holder of the assignment which shall specify the violation, the action necessary to correct the violation and the date by which the action must be taken. The date the notice is issued shall be the date from which an appeal right is counted under LCC 550.750.

(F) A person receiving a notice of the suspension, revocation, or contingent suspension or revocation of an ASA may request a hearing before the Board by complying with LCC 550.750.

[Adopted 01-110 §3 eff 06/27/01 (see OAR 333-260-0020 (3.5.k), 333-260-0050)]

550.850 Service record requirement

(A) An ASA provider approved pursuant to this Chapter shall maintain service records adequate for Linn County to review and determine whether to suspend or revoke the assignment of an ASA to that provider under LCC 550.840.

(B) An ASA provider approved pursuant to this Chapter upon written request by the Board shall make available within a reasonable time the records described in subsection (A) of this section to the Board for its inspection and copying.

[Adopted 01-110 §3 eff 06/27/01 (see OAR 333-260-0020 (3.5.k), 333-260-0050)]

IX. PENALTIES

550.900 Penalties

(A) Violation of any of the following provisions is a Class "A" violation:

- (1) LCC 550.440 (A);
- (2) LCC 550.445;
- (3) LCC 550.450;
- (4) LCC 550.460 (D);
- (5) LCC 550.470;
- (6) LCC 550.475;
- (7) LCC 550.515;
- (8) LCC 550.535;

(9) LCC 550.580; and

(10) LCC 550.650.

(B) Failure from day-to-day to comply with the provisions described in subsection (A) of this section shall be a separate offense for each such day.

(C) Failure to comply with any of the provisions described in subsection (A) of this section shall be a separate offense for each such provision.

(D) A violation of any of the provisions described in subsection (A) of this section is punishable, upon conviction, as a Class A violation by a penalty as set forth in LCC 240.900(C).

[Adopted 01-110 §3 eff 06/27/01 (see OAR 333-260-0020 (3.5.k), 333-260-0050); amd 22-101 §1 eff 07/01/22]

Statutory References and Other Authorities:

ORS 192.525 to 192.530; ORS 203; ORS Chapters 401, 469, and 597; 682.205, 682.275; OAR Chapter 333, Divisions 200, 255 and 260; Linn County Emergency Operations Plan, adopted by Order 98-414 OAR 333-200-0080.

Legislative History of Chapter 550:

First adoption: 88-683 eff 12/21/88

Amendments to 88-683:

#1 92-___ eff 8/12/92

#2 93-___ eff 05/26/93

#3 99-056 §2 eff 2/10/99

#4 01-110 §1 repealed 88-863 eff 6/27/01

Second adoption: 01-110 §3 eff 06/27/01

01-110 §1 repealed 88-683 as amended

Amendments to 01-110

#1 04-011 eff 1/7/04

#2 22-101 eff 7/1/22

Appendix 1 — Two Maps Showing Response Time Zones, 9-1-1, Fire Districts, and Incorporated Cities

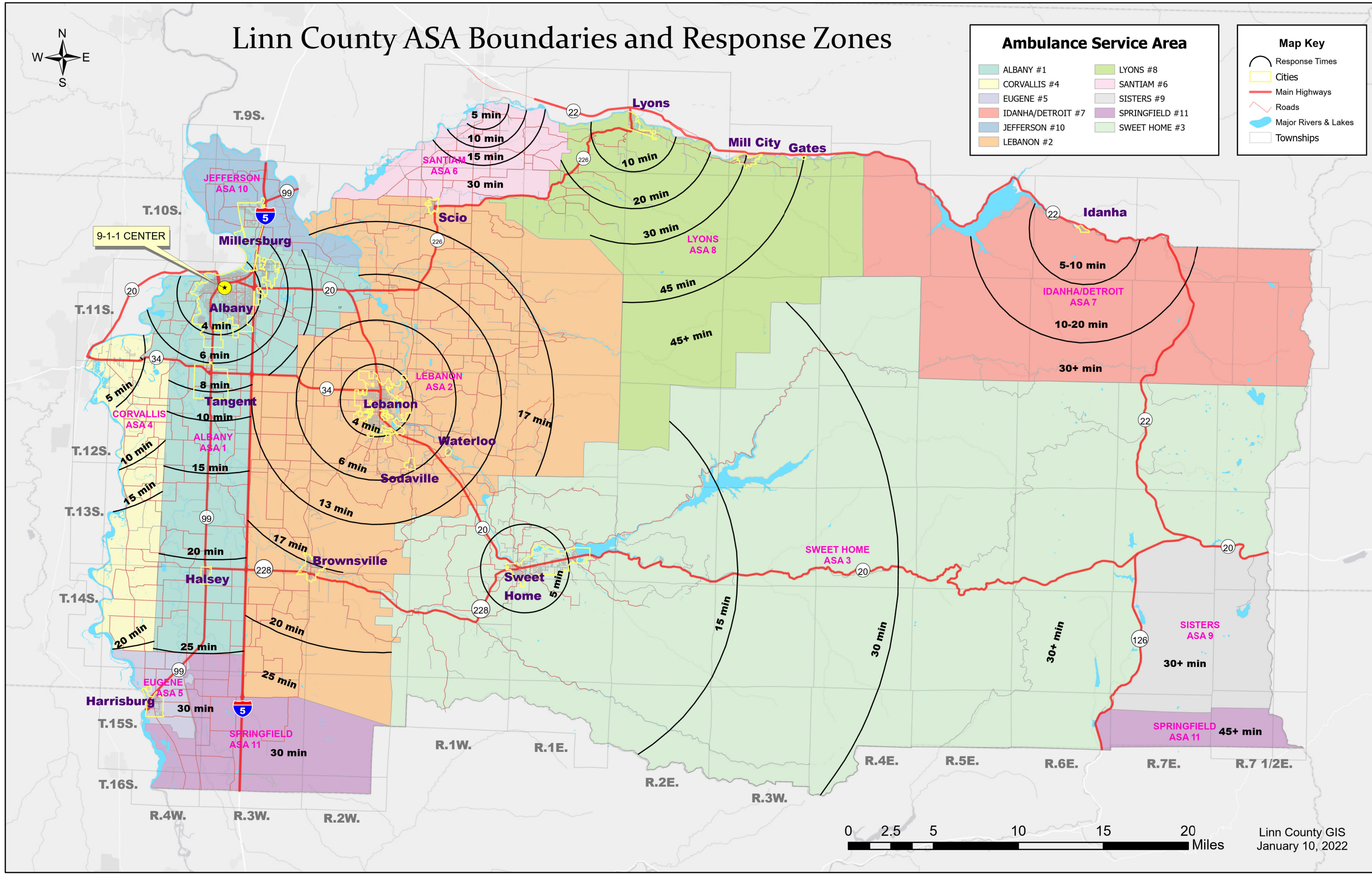
[see maps following this page]

Linn County ASA Boundaries and Response Zones



Ambulance Service Area	
ALBANY #1	LYONS #8
CORVALLIS #4	SANTIAM #6
EUGENE #5	SISTERS #9
IDANHA/DETROIT #7	SPRINGFIELD #11
JEFFERSON #10	SWEET HOME #3
LEBANON #2	

Map Key	
	Response Times
	Cities
	Main Highways
	Roads
	Major Rivers & Lakes
	Townships



Linn County Rural Fire Districts



Rural Fire Districts

ALBANY	IDANHA	SCIO
ALBANY RURAL	JEFFERSON	STAYTON
BROWNSVILLE	LEBANON	SWEETHOME
CORVALLIS	LYONS	TANGENT
GATES	MILL CITY	OUT
HALSEY_SHEDD	MILLERSBURG	
HARRISBURG	MOHAWK	

Map Key

	Cities
	Main Highways
	Roads
	Major Rivers & Lakes
	Townships

